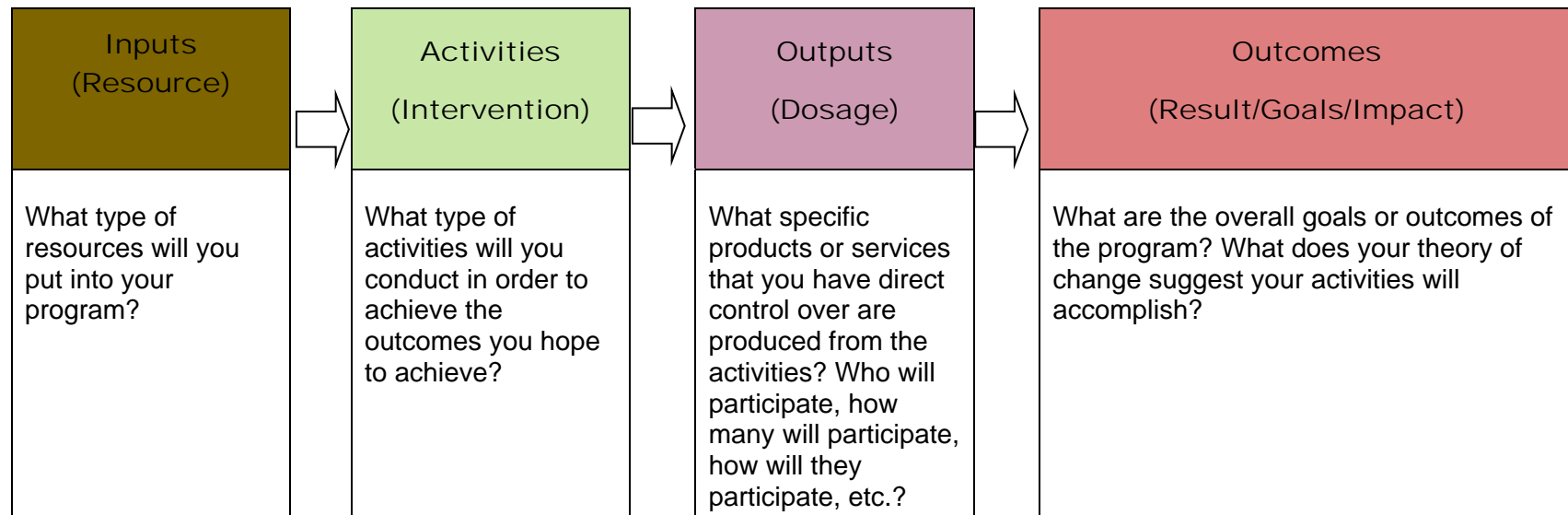


Basic Logic Model¹ (Documenting your Program)

Theory of Change: What is the theory behind your program design?



Objectives & Goals: Most grants require you to define goals and objectives for reaching those goals. Goals are often derived from outcomes, they are the present tense statement of what you hope to achieve. Objectives are ways to achieve goals, and sometimes these objectives are outputs, while other times they are short-term outcomes.

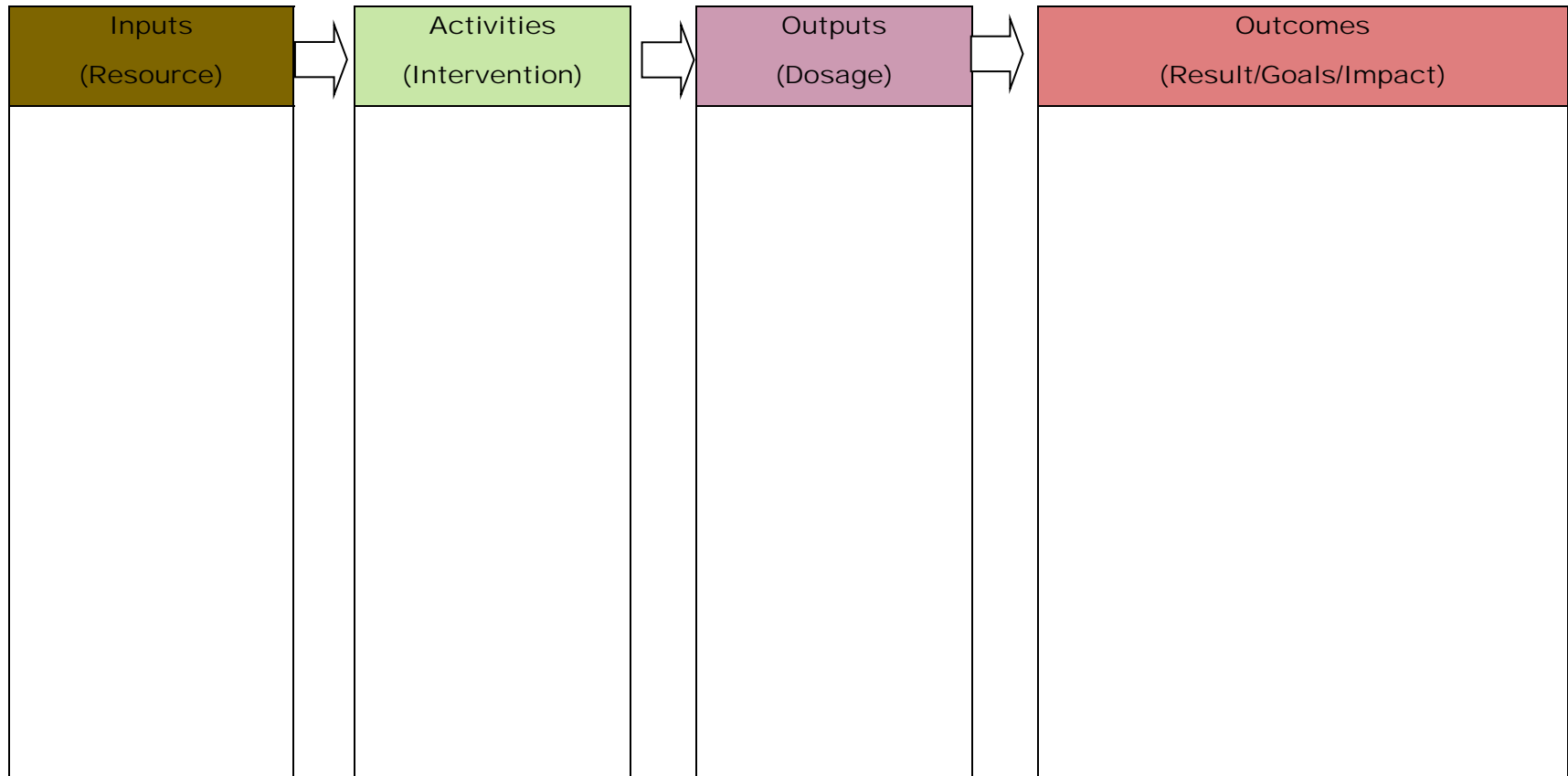
Assumptions: What assumptions do you have to make in order for your activities to achieve the desired outcome?

External Factors: What factors out of your control may have an impact on the ability of your program to achieve its desired outputs and outcomes?

¹ Adapted from the University Of Wisconsin–Extension Cooperative Extension, Program Action Logic Model available at <http://www.uwex.edu/ces/pdande>

Logic Model

Theory of Change:



Assumptions:

External Factors: