

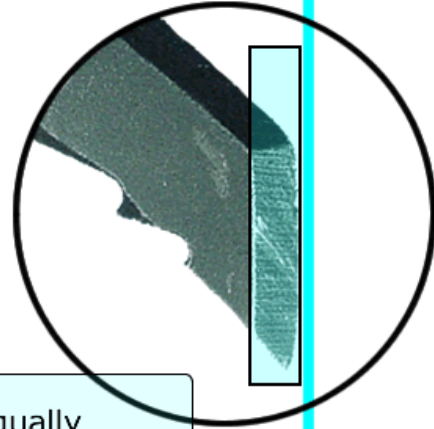
Sharpening the Pick

1

For pure ice climbing, modern picks do not need modification - brand new picks work best. Therefore, every time I feel compelled to sharpen a pick, I work to maintain the original configuration (i.e. angles)

On older picks or picks that have been hammered, it may be difficult to restore the original configuration

See the pick area highlighted in green?
That's the beveled area you'll be working on



NOTE:

Work both sides equally
Maintain the original angle

Sharpening the Pick

2

Restoring the original pick configuration and performance:

1. Use a new pick as a guide or observe the angles of the bevel you are about to file
2. Apply a couple of drops of oil to the file
3. I use a 16" file for sharpening at home. This allows me to grasp the file at both ends for stability
4. Use a vise, if possible
5. It may be helpful to remove the pick from the tool
7. Take care not to remove too much material from either bevel

"Basically, I want to avoid rounding the bevels"



NOTE:

I always work to maintain the angle
Avoid "rolling" the file
Inspect and correct after each stroke
File the whole surface of the bevel

90°

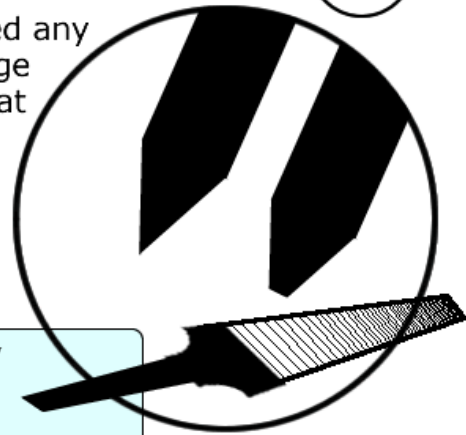
Sharpening the Pick

3

Knocking down the edge

After I have restored the bevels and removed any dings, I pass the file over the very sharp edge removing a tiny bit of steel and creating a flat surface.

The resulting edge will achieve excellent penetration and will remain sharp after many pick placements.



NOTE:

Take care to remove material evenly

The flat surface is only a couple of thousands of an inch wide

Very light pressure is all that is required to "knock down" the sharp edge

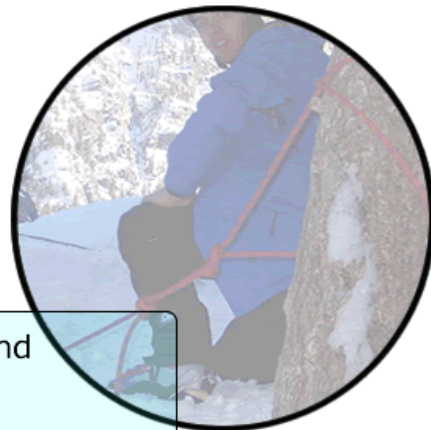
Sharpening the Pick

4

Field Sharpening

It is more difficult but the same principals mentioned in modules 1, 2 and 3 apply.

Leave the pick on the tool and wedge it so the pick does not move around - try a crack, boulder or your thigh



NOTE:

Save major repairs for the vise and big file at home

Got oil? How about the vegi oil from a tin of fish?

Sharpening the Front Points

5

Modern crampons have front points very similar to ice tool picks so please refer to the pick sharpening modules 1, 2, and 3 for basic principals

Secondary and bottom points will require sharpening - I use a big file and vise

NOTE:

I remove the front points for major repairs

Sharp bottom points are key to ice climbing success as are sharp front points

